

CONTINUUM OF PROGRAMMING



**CAREER
DISCOVERY**



**CAREER
ORIENTATION**



**CAREER
TRAINING**



**CAREER & TECHNICAL
EDUCATION**

Updated: October 2024



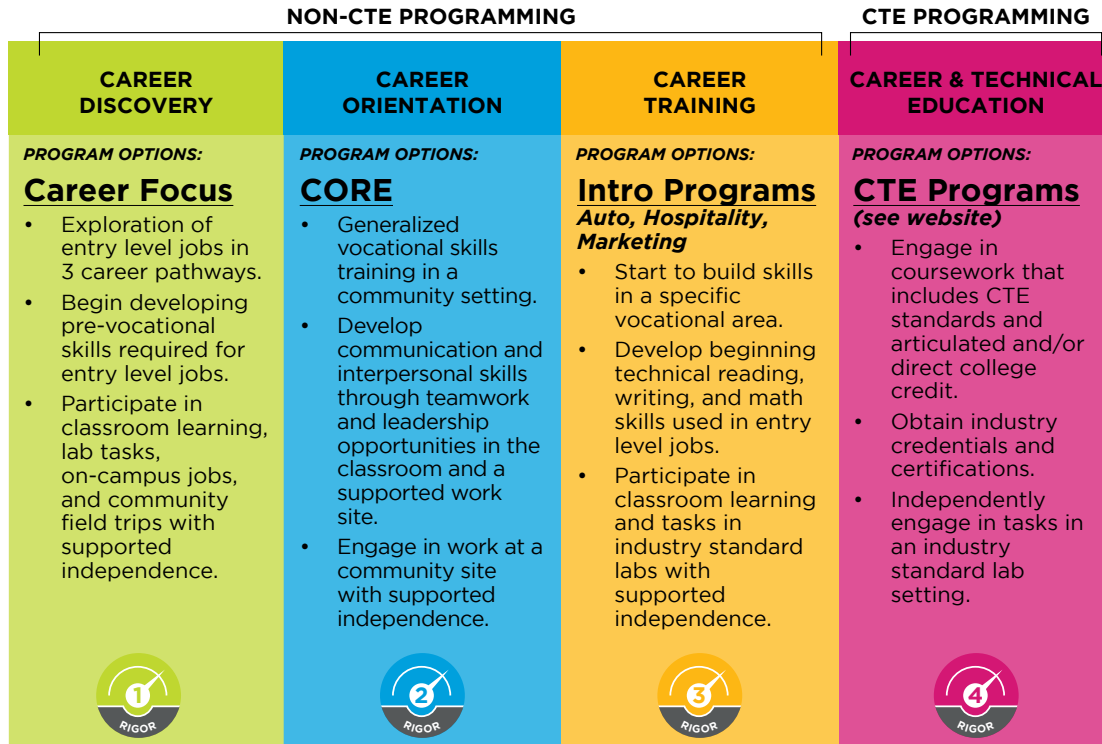
Kent Career Tech Center

a program of Kent ISD

PROGRAM CONTINUUM

At Kent Career Tech Center (KCTC) we believe *every student is a unique learner*. KCTC offers a continuum of programming to ensure all students have opportunities to reach their fullest potential.

As a starting point, requests for program exploration and enrollment can be made for the following options:



To be considered for enrollment in KCTC Programs:

- Student has successfully completed at least 2 years of high school
- Student has 11th or 12th grade status as determined by Certificate of Completion or LEA graduation requirements, Personal Curriculum (PC), and/or Individualized Education Program (IEP) by the start of the school year in which the student is enrolled.
- Student is not significantly credit deficient according to their Educational Development Plan (EDP) and/or IEP.

We provide this guide to support educators, parents, and students in identifying programs where individual learners are likely to achieve the greatest educational gains while enrolled at KCTC.



CAREER FOCUS PROGRAM

*The Career Focus program is **not a state-approved CTE program**.

CAREER DISCOVERY



EXPLORE, PLAN, & SET GOALS!

During this one year program, students will focus on building vocational skills while exploring different career pathways through participation in both classroom and lab based activities. Students will also gain experience through on campus jobs and community field trips.

Students explore one of the following areas/pathways each quarter:

- **Human Services**
Education, Childcare, Hospitality, etc.
- **Industrial Technology**
Automotive, Manufacturing, Construction, etc.
- **Industry Services**
Marketing, Retail, Office Services, etc.
- **General Vocational Skill Development**
Career-focused academics, work environment safety, Social Emotional Learning (SEL), and classroom/work environment culture

VOC INSTRUCTION



INDUSTRIAL TECHNOLOGY



INDUSTRY SERVICES



HUMAN SERVICES



Students who demonstrate the following characteristics are most likely to be successful, experience meaningful participation, and achieve the greatest vocational outcomes in this program:

Consistently demonstrate the following work-related behaviors:

- ❑ Be able to work independently or in a small or larger group
- ❑ Be able to communicate wants and/or needs independently or with the support of low/high assistive technology
- ❑ Be able to demonstrate fine motor (ex. grasping, stacking) and gross motor (ex. lifting, carrying) skills to perform simple tasks
- ❑ Be able to follow one-step directions with minimal prompting
- ❑ Be able to navigate school and community appropriately and with minimal redirection
- ❑ Be able to generalize and transfer learning to a new setting with minimal prompting
- ❑ Be able to transition between tasks and locations with minimal prompting
- ❑ Be able to show a willingness to learn, work, and participate in the classroom and lab environment
- ❑ Be able to independently navigate basic hygiene, grooming, and personal care needs in a vocational environment
- ❑ Be able to adhere to a vocational dress code
- ❑ Be able to attend daily to meet the 90% KCTC attendance requirement

Academics: Student can demonstrate skills needed to engage in coursework that includes: Exploratory Vocational Curriculum (Pathways), Functional Technical Reading & Writing, Functional Math, Generalized Vocational Vocabulary, Personal Finances, Independence on Campus, and Pro-Social Skills.

Vocational: Student can demonstrate skills needed to engage in vocational experiences that include: Exploratory Vocational curriculum, Foundational Workplace Skills, Personal Finances, Career Development Activities (EDP), Supported Independence in Lab, Communication Skills, Stamina, and Work Quality.

Outcomes: Upon successful completion of the Career Focus Program **KCTC recommends elective credit.** Students returning to KCTC for a second year may be recommended for an Intro Program or the CORE Program.

CORE VOCATIONAL PROGRAM

CAREER ORIENTATION



The CORE program is **not a state-approved CTE program.*

HELPING STUDENTS REACH THEIR POTENTIAL!

CORE is an innovative program designed to meet the needs of Kent ISD's secondary students who are not yet prepared for independent and competitive employment, but demonstrate community ready skills.

CORE helps prepare students for independent living by focusing mainly on career and employability skills. CORE provides soft-skills and job skills training through career readiness experiences on the KCTC campus and in a community setting.

The main components of the program are:

- Functional Academic Skills
- Vocational Skills
- Communication Skills
- Interpersonal Skills



Students who demonstrate the following characteristics are most likely to be successful, experience meaningful participation, and achieve the greatest vocational outcomes in this program:

Consistently demonstrate the following work-related behaviors:

- ❑ Be able to self-regulate behavior and demonstrate appropriate behavior in a public setting
- ❑ Be able to follow multi-step directions with minimal prompting
- ❑ Be able to demonstrate fine motor (ex. grasping, stacking) and gross motor (ex. lifting, carrying) skills to perform simple tasks
- ❑ Be able to learn to adapt behavior based on feedback
- ❑ Be able to work independently without direct supervision for periods of time
- ❑ Be able to transition between tasks and locations with minimal prompting
- ❑ Be able to display the physical stamina to work for long periods of time
- ❑ Be able to show a willingness to learn, work, and participate in the community
- ❑ Be able to adhere to a vocational dress code
- ❑ Be able to Independently navigate basic hygiene, grooming, and personal care needs in a vocational environment
- ❑ Be able to attend daily to meet the KCTC 90% attendance requirement

Academics: Student can demonstrate skills needed to engage in coursework that includes: Vocational Curriculum (General), Functional Technical Reading & Writing, Functional Math, Generalized Vocational Vocabulary, Personal Finances, Independence on Campus, and Pro-Social Skills.

Vocational: Student can demonstrate skills needed to engage in vocational experiences that include: Generalized Vocational Curriculum, Workplace Skills, Personal Finances, Supported Independence in Lab, Communication Skills, Stamina, and Work Quality.

Outcomes: Upon successful completion of the CORE Program, **KCTC recommends elective credit.** Students returning may be eligible for WBL or an Intro Program



INTRO PROGRAMS

CAREER TRAINING



The Intro Programs are **not state-approved CTE programs.*

BEGIN A PATHWAY TO VOCATIONAL TRAINING!

Each Intro to CTE class is a one year program in which students participate in classroom learning and lab activities. The curriculum for each class aligns to vocational standards and integrates 4th year math and VPAA standards. **Prior participation in career exploration activities is recommended to maximize student success in the Intro Programs.*

Consistently demonstrate the following work-related behaviors:

- Be able to stay focused on a task until completion
- Be able to work in a vocational setting for 2+ hours
- Be able to follow multiple-step directions in sequence (written or verbal)
- Be able to work productively (task completion) with minimal supervision
- Be able to actively participate in a group setting to achieve a goal
- Be able and willing to follow industry standard safety rules in the lab and/or work environment with independence
- Be able to adhere to a vocational dress code
- Be able to attend daily to meet the KCTC 90% attendance requirement
- Be able to independently navigate basic hygiene, grooming, and personal care needs in a vocational environment

Academics: Student can demonstrate skills needed to engage in coursework that includes: Beginning Technical Industry Academics (Reading, Math, & Writing), Integrated VPAA & Math Content Expectations (4th Math Experience), and Technical (CTE) Industry Vocabulary.

Career & Technical Education: Student can demonstrate skills needed to engage in industry experiences that include: Supported Independence in Lab Settings, Industry Technique & Skills Vocabulary, Entry-Level Industry Credentials & Certifications, and Beginning Competitive Industry Credentials & Certifications.

Work-Based Learning: Student can demonstrate skills needed to engage in potential Externships (Non-paid Experiences), Paid & Unpaid Internships (Long-term Opportunities), and Supported Independence in Work Environment.

Outcomes: Upon completion, **KCTC recommends VPAA and Math Credit.** Students who successfully complete year one in this program may be recommended for Work-Based Learning or CTE Programming

The following are student characteristics indicative of maximized student achievement, meaningful participation, and outcomes for each KCTC Intro Program:



**Intro to
AUTOMOTIVE**

- Uniform compliance (short fingernails, and hair pulled back).
- Fine and gross motor skills (work with nuts, bolts, screws and various tools)
- Physical ability and stamina to lift (up to 50lbs), and use tools to preform mechanical repairs.
- Ability to complete basic forms. Willingness to get dirty/greasy.
- Tolerate loud noises and strong smells.
- Basic understanding of fractions and measurement.



**Intro to
MARKETING**

- Basic math functions and operations in order to apply business formulas.
- Willingness to clean and maintain the appearance of workplace.
- Ability to complete independent written and/or multimedia projects such as marketing plans, product research.
- Use technology to learn independently using various educational programs and platforms.
- Consistently demonstrate skills that align with community setting norms and expectations.



**Intro to
HOSPITALITY**

- Ability to work at a fast pace (sense of urgency, time-focused)
- Tolerate strong smells and a noisy environment.
- Strength and stamina to work for lengthy periods of time.
- Basic understanding of fractions and measurement.
- Willingness to follow uniform compliance (short nails, no nail polish, removal of exposed piercings, hair must be covered).
- Hand-eye coordination that allows for the use of knives, measuring ingredients, etc.
- Sanitation skills - understanding the cleaning is an important part of the everyday job.



FULL CTE PROGRAMS



** Prior participation in career exploration activities is recommended to maximize student success in the Full CTE programs.*



4000+ College Credits
Earned for Free by Students
Every Year



95% of Students
Return to The Tech Center
for a Second Year



5000+ Professional Certifications
Earned by Students
Every Year

Scan for more information about all KCTC Programs and updates.



Students who demonstrate the following characteristics are most likely to be successful, experience meaningful participation, and achieve the greatest outcomes in CTE programs:

Consistently demonstrate the following work-related behaviors:

- Be able to identify when support is needed and demonstrate self advocacy skills by requesting support when it is needed
- Be able to stay focused in a classroom or lab environment for 2+ hours
- Be able to independently follow multiple-step directions in sequence (written or verbal)
- Be able to work productively (task completion) with independence and minimal supervision
- Be able to actively participate in a group setting to achieve a goal
- Be able and willing to follow industry standard safety rules in the lab and/or work environment with independence
- Be able to adhere to a vocational dress code
- Be able to attend daily to meet the KCTC 90% attendance requirement
- Be able to apply Industry Technical Skills in a simulated or Work-Based Learning (WBL) experience with independence and minimal supervision

Academics: Student can demonstrate skills needed to engage in coursework that includes: CTE Curriculum Standards, Articulated and/or Direct College Credit, Significant Technical Industry Academics (Reading, Math, & Writing), and Technical (CTE) Industry Vocabulary.

Career & Technical Education: Student can demonstrate skills needed to engage in industry experiences that include: Competitive & Advanced Industry Credentials & Certifications, Industry Lab Safety Standards, Industry Technical Skills, and Industry Skill Evaluations.

Work-Based Learning: Student can demonstrate skills needed to engage in potential Externships (Non-paid Experiences), Paid & Unpaid Internships (Long-term Opportunities), Industry Clinicals (Credentials & Certifications), and Independence in Work Environment.

Outcomes: Students returning for a second year may be eligible for an Advanced CTE option including paid and unpaid industry internships. **See website for High School and College credit recommendations and opportunities.**



KentCareer TechCenter

a program of **Kent ISD**

October 2024